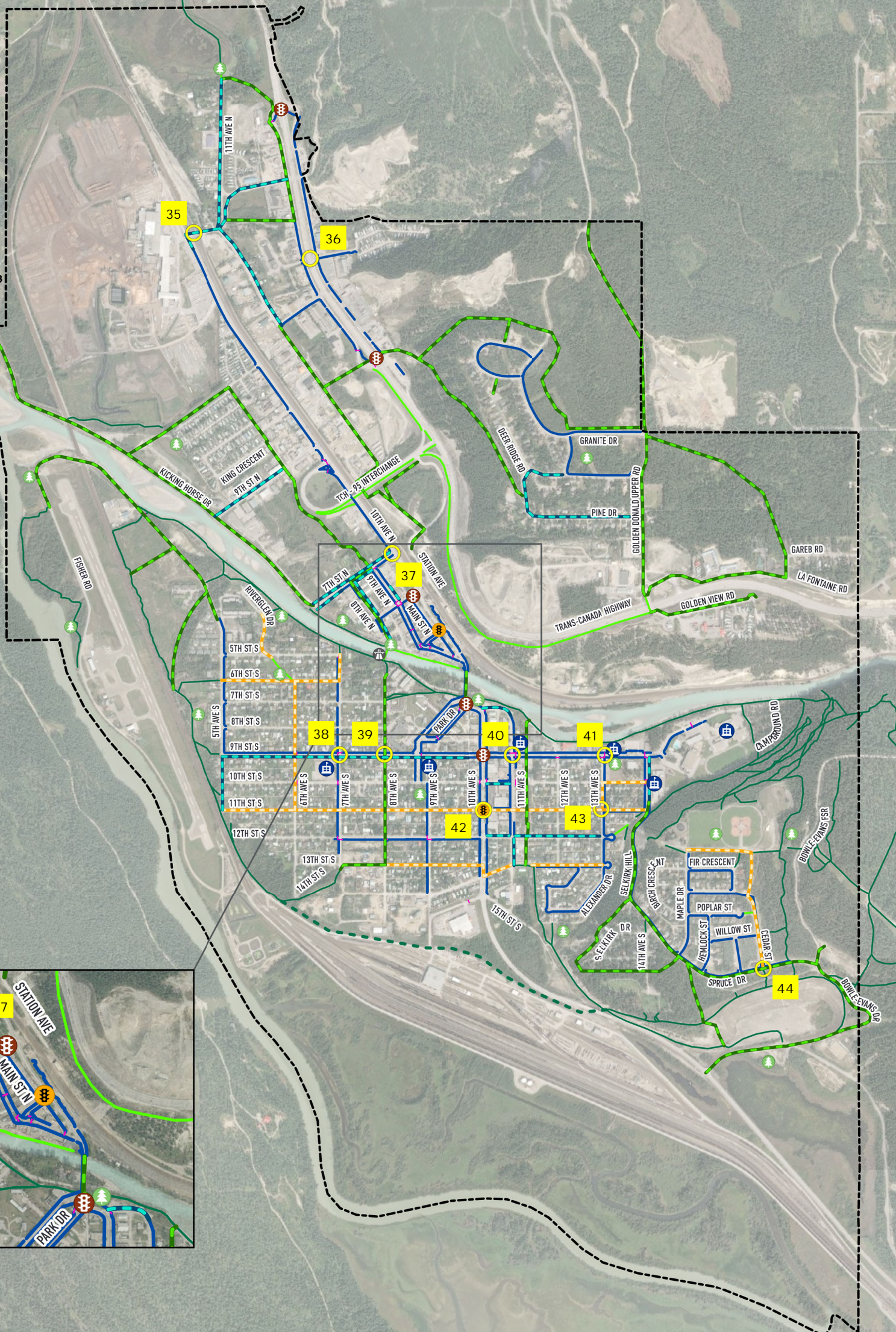
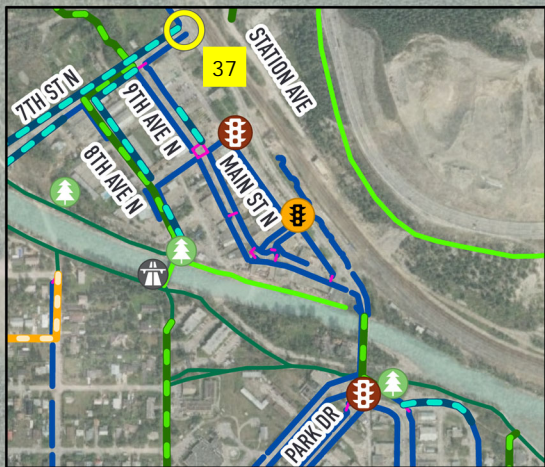


# DRAFT Proposed Crossing Map

Last updated by SdeBoerFuller on January 18, 2022 at 11:08 AM. Last exported by SdeBoerFuller on January 18, 2022 10:39 AM. Last printed by SdeBoerFuller on January 18, 2022 11:08 AM.

**To Kicking Horse Mountain Resort & Trailhead Parking**



**Legend**

- |                        |                   |                                 |   |               |
|------------------------|-------------------|---------------------------------|---|---------------|
|                        | Park              | Existing Crosswalk              | Proposed Crossing Improvement           | Town Boundary |
| 0 100 200 300 Meters   | Pedestrian Bridge | Existing Sidewalk               | Proposed Sidewalk                       |               |
| <b>Scale: 1:17,500</b> | School            | Existing Multi-use Path (Paved) | Proposed Multi-use Path                 |               |
|                        | Traffic Signal    | Existing Trail (Unpaved)        | Proposed Active Transportation Corridor |               |
|                        | Flashing Beacon   | Proposed Trail (Unpaved)        |   |               |

#	Route Name	Streets
<b>Proposed Sidewalks</b> <i>Proposed sidewalks are continuous, concrete sidewalks that support pedestrians (including people using mobility aids) to walk comfortably and safely throughout Golden's sidewalk network.</i>		
1	11 <sup>th</sup> Avenue North	New sidewalks on one side of the street on 11 <sup>th</sup> Ave N from Edelweiss Slough to 11 <sup>th</sup> St N
2	Highway 1 to Rail Crossing at 10 <sup>th</sup> Avenue North/13 <sup>th</sup> Street North	New sidewalks on one side of the street on 14 <sup>th</sup> St N, 11 <sup>th</sup> Ave N, 13 <sup>th</sup> St N, 10 <sup>th</sup> Ave N
3	Pine Drive	New sidewalks on one side of the street on Pine Dr
4	Downtown Network	New sidewalks to fill in the gaps in the downtown sidewalk network on 7 <sup>th</sup> St N, 9 <sup>th</sup> Ave N and 8 <sup>th</sup> Ave N
5	11 <sup>th</sup> Avenue South	New sidewalks on the north side of 11 <sup>th</sup> Ave S at 10 <sup>th</sup> Ave S
6	9 <sup>th</sup> Street South	New sidewalks on the south side of 9 <sup>th</sup> St S between 5 <sup>th</sup> Ave S to 10 <sup>th</sup> Ave S, new sidewalks on 5 <sup>th</sup> Ave S
7	Alexander Park Elementary	New sidewalks on the east side of 14 <sup>th</sup> Ave S
8	10 <sup>th</sup> Street South	New sidewalks on the south side of 10 <sup>th</sup> St S between 10 <sup>th</sup> Ave S and 11 <sup>th</sup> Ave S
9	12 <sup>th</sup> Street South	New sidewalks on one side of the street on 12 <sup>th</sup> St S between 10 <sup>th</sup> Ave S and 13 <sup>th</sup> Ave S, 11 <sup>th</sup> Ave S
<b>Proposed Multi-use Paths</b> <i>Proposed multi-use trails are shared facilities for bicycles and pedestrians. Multi-use trails will likely be paved when adjacent to a roadway and can remain unpaved when located within parks and green space.</i>		
10	Edelweiss Slough	Connect Edelweiss Slough to Highway 1 and south to the Highway 1 Connector. Implement through development – alignment to be determined.
11	Highway 1 Connector	Connect 11 <sup>th</sup> Ave N to Highway 1 Frontage Rd. Implement through development – alignment to be determined.
12	Golden Donald Upper Road	Connect Highway 1 to Golden Skybridge via Golden Donald Upper Rd
13	Quartz Crescent	Connect Highway 1 to Golden Donald Upper Rd. Implement through development – alignment to be determined. Property acquisition required.
14	11 <sup>th</sup> Avenue North	Connect 11 <sup>th</sup> Ave N to Highway 1 interchange
15	11 <sup>th</sup> Street North/9 <sup>th</sup> Avenue North	Connect Kicking Horse Pedestrian Bridge with downtown and Kicking Horse Drive. Implement through development – alignment to be determined. Property acquisition required.
16	Downtown-Kicking Horse Drive	Connect downtown to Columbia River Crossing via Kicking Horse Drive
17	Deer Ridge Connector	Connect Highway 1 to Pine Dr. Property acquisition required.
18	Station Avenue Connector	Connect to Highway 1 via Station Avenue
19	La Fontaine Road	Connect Gareb Rd via La Fontaine Rd to create loop to Golden Donald Upper Rd. Implement through development – alignment to be determined.
20	Golden View Road	Connect Golden Hill Path to Whispering Spruce Campground via Golden View Rd.
21	Fisher Road	Connect Confluence Park to 5 <sup>th</sup> Ave S via Fisher Rd. Implement through development – alignment to be determined. Property acquisition required.
22	Kicking Horse River Pedestrian Bridge Connector	Connect the Kicking Horse River Pedestrian Bridge to 7 <sup>th</sup> Ave S and 13 <sup>th</sup> St S via 8 <sup>th</sup> Ave S
23	Highway 95 Bridge Replacement Project	Connect north and south Golden with the Highway 95 Bridge Replacement Project
24	11 <sup>th</sup> Avenue South	Connect the Rotary Trail along the Kicking Horse River to 13 <sup>th</sup> St S via old railway corridor between 11 <sup>th</sup> Ave S and 12 <sup>th</sup> Ave S
25	Selkirk Hill	Connect 11 <sup>th</sup> St S to Bowle-Evans Dr via Selkirk Hill and Spruce Dr
26	Selkirk Escarpment Trail	Loop around Selkirk Dr to Spruce Dr
27	Bowle-Evans/Reflection Road	Connect Bowle-Evans Dr and Reflection Rd to Highway 95
<b>Proposed Active Transportation Corridors</b> <i>Proposed active transportation corridors will accommodate people walking and cycling. Bicyclists will share the road with vehicles on low volume and low speed streets. Some traffic calming may be implemented to ensure slower vehicle speeds.</i>		
28	Riverglen Connector	Connect the Rotary Trail along the Kicking Horse River to 6 <sup>th</sup> St S
29	6 <sup>th</sup> Street South	Connect 5 <sup>th</sup> Ave S to the Rotary Trail along the Kicking Horse River at 7 <sup>th</sup> Ave S via 6 <sup>th</sup> St S
30	6 <sup>th</sup> Avenue South	Connect 11 <sup>th</sup> St S to 6 <sup>th</sup> St S via 6 <sup>th</sup> Avenue S
31	11 <sup>th</sup> Street South	Connect 5 <sup>th</sup> Ave S to 14 <sup>th</sup> Ave S via 11 <sup>th</sup> St S
32	Alexander Park Elementary Connector	Connect to Alexander Park Elementary from 11 <sup>th</sup> St S via 13 <sup>th</sup> Ave S and 10 <sup>th</sup> St S
33	13 <sup>th</sup> Street South	Connect 8 <sup>th</sup> Ave S to 13 <sup>th</sup> Ave S via 13 <sup>th</sup> St S
34	Cedar Street Connector	Connect Spruce Dr and Maple Cres via Fir Cres and Cedar St
<b>Proposed Crossing Improvements</b> <i>Proposed crossing improvements are intended to enhance safety, access, and comfort for pedestrians and cyclists at intersections. Crossing improvements could include crosswalks, curb extensions, push buttons to activate rapid flashing beacons or signals.</i>		
35	13 <sup>th</sup> Street North Railway Crossing	13 St N at 10 <sup>th</sup> Ave N
36	Highway 1 / 12 <sup>th</sup> Street North Crossing	12 St N at Highway 1
37	10 <sup>th</sup> Avenue North / 7 <sup>th</sup> Street North Crossing	10 <sup>th</sup> Ave N at 7 <sup>th</sup> St N
38	Lady Grey Elementary School Crossing	7 <sup>th</sup> Ave S at 9 <sup>th</sup> St S
39	Golden & District Hospital Crossing	8 <sup>th</sup> Ave S at 9 <sup>th</sup> St S
40	École La Confluence Crossing	11 <sup>th</sup> Ave S at 9 <sup>th</sup> St S
41	College of the Rockies Crossing	13 <sup>th</sup> Ave S at 9 <sup>th</sup> St S
42	Highway 95 / 11 <sup>th</sup> Street South Crossing	10 <sup>th</sup> Ave S at 11 <sup>th</sup> St S
43	13 <sup>th</sup> Avenue South at 11 <sup>th</sup> Street South	13 <sup>th</sup> Ave S at 11 <sup>th</sup> St S
44	Spruce Drive Crossing	Cedar St at Spruce Dr