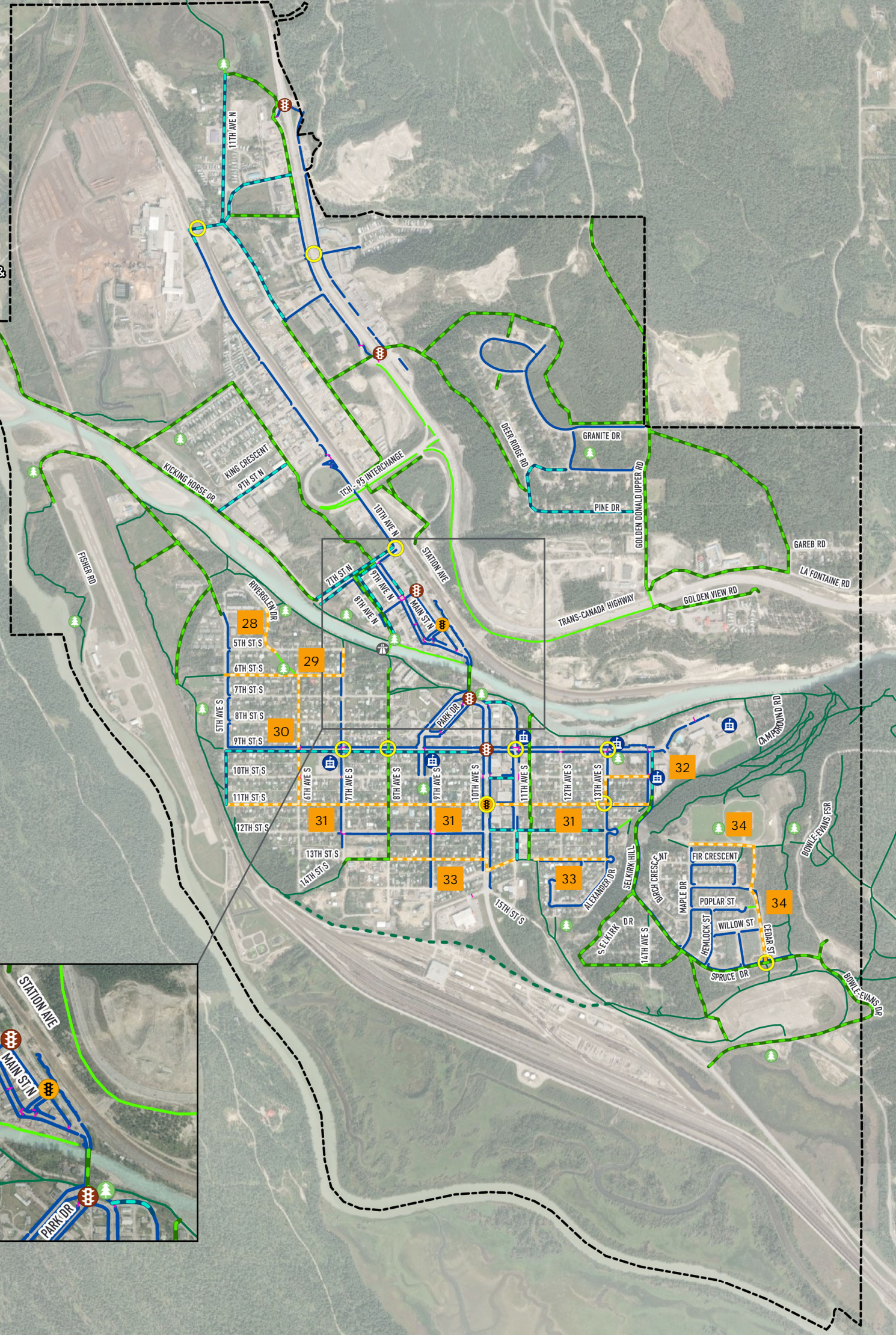
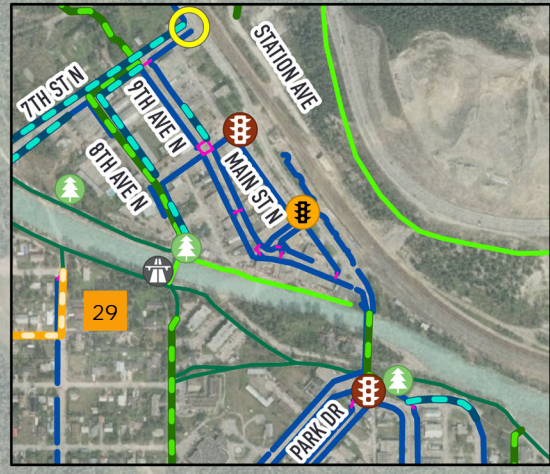


DRAFT Proposed Active Corridor Map

Last updated by SdeBoerFuller on January 18, 2022 at 11:08 AM. Last exported by SdeBoerFuller on January 18, 2022 10:39 AM. Last printed by SdeBoerFuller on January 18, 2022 11:08 AM.

To Kicking Horse Mountain Resort & Trailhead Parking



<p>0 100 200 300 Meters Scale: 1:17,500</p>	<p>Legend</p> <ul style="list-style-type: none"> Park Pedestrian Bridge School Traffic Signal Flashing Beacon Existing Crosswalk Existing Sidewalk Existing Multi-use Path (Paved) Existing Trail (Unpaved) 	<ul style="list-style-type: none"> Proposed Crossing Improvement Proposed Sidewalk Proposed Multi-use Path Proposed Active Transportation Corridor Proposed Trail (Unpaved) 	<ul style="list-style-type: none"> Town Boundary
---	--	---	--

#	Route Name	Streets
Proposed Sidewalks <i>Proposed sidewalks are continuous, concrete sidewalks that support pedestrians (including people using mobility aids) to walk comfortably and safely throughout Golden's sidewalk network.</i>		
1	11 th Avenue North	New sidewalks on one side of the street on 11 th Ave N from Edelweiss Slough to 11 th St N
2	Highway 1 to Rail Crossing at 10 th Avenue North/13 th Street North	New sidewalks on one side of the street on 14 th St N, 11 th Ave N, 13 th St N, 10 th Ave N
3	Pine Drive	New sidewalks on one side of the street on Pine Dr
4	Downtown Network	New sidewalks to fill in the gaps in the downtown sidewalk network on 7 th St N, 9 th Ave N and 8 th Ave N
5	11 th Avenue South	New sidewalks on the north side of 11 th Ave S at 10 th Ave S
6	9 th Street South	New sidewalks on the south side of 9 th St S between 5 th Ave S to 10 th Ave S, new sidewalks on 5 th Ave S
7	Alexander Park Elementary	New sidewalks on the east side of 14 th Ave S
8	10 th Street South	New sidewalks on the south side of 10 th St S between 10 th Ave S and 11 th Ave S
9	12 th Street South	New sidewalks on one side of the street on 12 th St S between 10 th Ave S and 13 th Ave S, 11 th Ave S
Proposed Multi-use Paths <i>Proposed multi-use trails are shared facilities for bicycles and pedestrians. Multi-use trails will likely be paved when adjacent to a roadway and can remain unpaved when located within parks and green space.</i>		
10	Edelweiss Slough	Connect Edelweiss Slough to Highway 1 and south to the Highway 1 Connector. Implement through development – alignment to be determined.
11	Highway 1 Connector	Connect 11 th Ave N to Highway 1 Frontage Rd. Implement through development – alignment to be determined.
12	Golden Donald Upper Road	Connect Highway 1 to Golden Skybridge via Golden Donald Upper Rd
13	Quartz Crescent	Connect Highway 1 to Golden Donald Upper Rd. Implement through development – alignment to be determined. Property acquisition required.
14	11 th Avenue North	Connect 11 th Ave N to Highway 1 interchange
15	11 th Street North/9 th Avenue North	Connect Kicking Horse Pedestrian Bridge with downtown and Kicking Horse Drive. Implement through development – alignment to be determined. Property acquisition required.
16	Downtown-Kicking Horse Drive	Connect downtown to Columbia River Crossing via Kicking Horse Drive
17	Deer Ridge Connector	Connect Highway 1 to Pine Dr. Property acquisition required.
18	Station Avenue Connector	Connect to Highway 1 via Station Avenue
19	La Fontaine Road	Connect Gareb Rd via La Fontaine Rd to create loop to Golden Donald Upper Rd. Implement through development – alignment to be determined.
20	Golden View Road	Connect Golden Hill Path to Whispering Spruce Campground via Golden View Rd.
21	Fisher Road	Connect Confluence Park to 5 th Ave S via Fisher Rd. Implement through development – alignment to be determined. Property acquisition required.
22	Kicking Horse River Pedestrian Bridge Connector	Connect the Kicking Horse River Pedestrian Bridge to 7 th Ave S and 13 th St S via 8 th Ave S
23	Highway 95 Bridge Replacement Project	Connect north and south Golden with the Highway 95 Bridge Replacement Project
24	11 th Avenue South	Connect the Rotary Trail along the Kicking Horse River to 13 th St S via old railway corridor between 11 th Ave S and 12 th Ave S
25	Selkirk Hill	Connect 11 th St S to Bowle-Evans Dr via Selkirk Hill and Spruce Dr
26	Selkirk Escarpment Trail	Loop around Selkirk Dr to Spruce Dr
27	Bowle-Evans/Reflection Road	Connect Bowle-Evans Dr and Reflection Rd to Highway 95
Proposed Active Transportation Corridors <i>Proposed active transportation corridors will accommodate people walking and cycling. Bicyclists will share the road with vehicles on low volume and low speed streets. Some traffic calming may be implemented to ensure slower vehicle speeds.</i>		
28	Riverglen Connector	Connect the Rotary Trail along the Kicking Horse River to 6 th St S
29	6 th Street South	Connect 5 th Ave S to the Rotary Trail along the Kicking Horse River at 7 th Ave S via 6 th St S
30	6 th Avenue South	Connect 11 th St S to 6 th St S via 6 th Avenue S
31	11 th Street South	Connect 5 th Ave S to 14 th Ave S via 11 th St S
32	Alexander Park Elementary Connector	Connect to Alexander Park Elementary from 11 th St S via 13 th Ave S and 10 th St S
33	13 th Street South	Connect 8 th Ave S to 13 th Ave S via 13 th St S
34	Cedar Street Connector	Connect Spruce Dr and Maple Cres via Fir Cres and Cedar St
Proposed Crossing Improvements <i>Proposed crossing improvements are intended to enhance safety, access, and comfort for pedestrians and cyclists at intersections. Crossing improvements could include crosswalks, curb extensions, push buttons to activate rapid flashing beacons or signals.</i>		
35	13 th Street North Railway Crossing	13 St N at 10 th Ave N
36	Highway 1 / 12 th Street North Crossing	12 St N at Highway 1
37	10 th Avenue North / 7 th Street North Crossing	10 th Ave N at 7 th St N
38	Lady Grey Elementary School Crossing	7 th Ave S at 9 th St S
39	Golden & District Hospital Crossing	8 th Ave S at 9 th St S
40	École La Confluence Crossing	11 th Ave S at 9 th St S
41	College of the Rockies Crossing	13 th Ave S at 9 th St S
42	Highway 95 / 11 th Street South Crossing	10 th Ave S at 11 th St S
43	13 th Avenue South at 11 th Street South	13 th Ave S at 11 th St S
44	Spruce Drive Crossing	Cedar St at Spruce Dr